

## RECESSED ANGLE WALL COMPRESSION FITTINGS FOR MULTILAYER PIPE

### Application

The **te-sa** angle wall female threaded connection compression fitting **292RSI** is designed to connect multilayer pipes at the utilities in different hydraulic applications.

Made of high-quality materials, is available for the most commercial pipe size 16x2. For recessed installation, the main use of this fitting is in combination with its assembly protection box Art. **292SP** and with its adaptor fitting **217RI** size 16x2.

This fitting is intended for uses on heating and cooling applications, as well as on hot and cold drinking water distribution systems.

All **te-sa** fittings are fully manufactured in Italy.



### Technical data

- Fittings for use in combination with size 16x2 multilayer pipes produced in the respect of the Standard EN-ISO 21003, and of the Standards related to it
- Intended for uses on water distribution systems and compressed air distribution for wall installation
- Outlet G1/2" female threaded. Inlet connection male machined for fitting 217RI with 1/2" nut
- Installation combined with accessories Art. 292SP (protection box made of PVC) and with fitting Art. 217RI-16020
- Fitting body made of forged brass UNI-EN12165 CW617N
- Maximum operating temperature 90 °C
- Maximum operating pressure 10 bar
- Suitable with heating water additioned with glycol solutions at maximum percentage of 30%
- Part number 292RSI-04F nickel plated to obtain higher corrosion resistance, or brass finished for the part number 292RSI-04FG
- Suggested assembly torque 20÷30 Nm



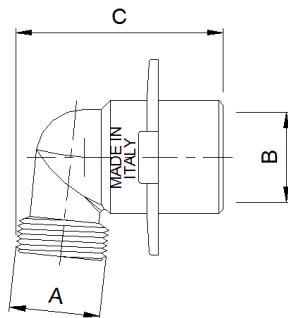
292SP



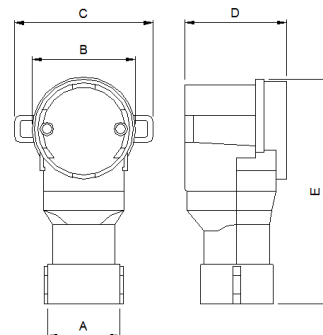
217RI-16020

**Warning:** maximum operating pressure and temperature could be reduced based on the characteristics of the pipe connected

### Dimensions



Art.	A	B	C
292RSI-04F	1/2"	1/2"F	48
292RSI-04FG	1/2"	1/2"F	48



Art.	A	B	C	D	E
292SP	35	50	67	49	108