

BRASS CAP

Application

The female caps Art. **214** are used in large quantity in the hydronic distribution of cold and hot water. The main use is on brass and stainless steel manifolds male threaded to close one head.

This series of caps is supplied with fiber gasket seal that permits, in the main part of the applications, to avoid addition of sealant materials as hemp or PTFE.

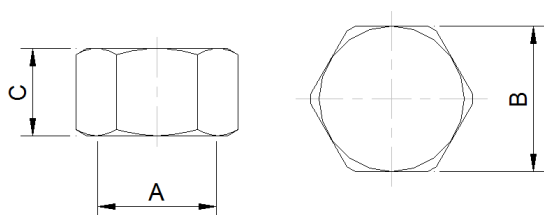
The chrome plating treatment permits to preserve the brass alloy by corrosion phenomena in the ordinary applications.



Technical data

- Available sizes in the range 1/2" to 1-1/2"
- Made of forged brass alloy UNI-EN12165 CW617N
- Fiber gasket seal included
- Chrome plated (*available brass finish for the size 1-1/2"*)

Dimensions



Art.	A	B	C
214-04	1/2"	25	13
214-05	3/4"	30	13
214-06	1"	37	15
214-07	1-1/4"	48	18
214-08	1-1/2"	53	18