

## BRASS CHROME PLATED DISTRIBUTION MANIFOLD

### Application

The 208BM **te-sa** distribution manifold is designed for the distribution of heat transfer fluid in heating and conditioning systems, and in general for water distributions inside buildings. Made of certified brass alloy material, it is very flexible in the applications because the user can connect different accessories on the barrel based on the application. The main application of this manifold is on radiator and fan coil systems where the balancing of the circuits is made using lockshield positioned on the emission point. The particular design of the manifold features a great flow section with reduced pressure drops and consequently lower energy consumption in the circulator pumps. The chrome plating treatment with high thickness makes the manifolds beautiful to see and corrosion resistant in the ordinary applications.



### Configuration and available sizes

The 208BM is a distribution manifold with head connections female threaded, and branch connections for fittings 3/4 Eurocone. The manifold has a G1/2" threaded hole in the opposite side of the branches that can be used for assembly a fill and drain valve or an air vent. Available with barrel sizes 1" and 1-1/4" it permits to satisfy every flow request. The centre distance 50 mm allows without problem to install fittings without special wrenches.

#### *1" inlet connections*

*Centre distance 50 mm*

208BM-065-02	2 Loops
208BM-065-03	3 Loops
208BM-065-04	4 Loops
208BM-065-05	5 Loops
208BM-065-06	6 Loops
208BM-065-07	7 Loops
208BM-065-08	8 Loops
208BM-065-09	9 Loops
208BM-065-10	10 Loops
208BM-065-11	11 Loops
208BM-065-12	12 Loops
208BM-065-13	13 Loops

#### *1-1/4" inlet connections*

*Centre distance 50 mm*

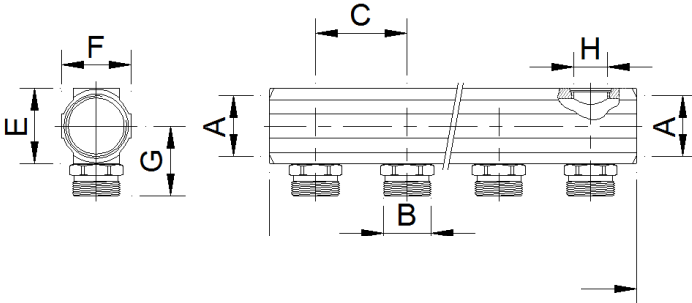
208BM-075-02	2 Loops
208BM-075-03	3 Loops
208BM-075-04	4 Loops
208BM-075-05	5 Loops
208BM-075-06	6 Loops
208BM-075-07	7 Loops
208BM-075-08	8 Loops
208BM-075-09	9 Loops
208BM-075-10	10 Loops
208BM-075-11	11 Loops
208BM-075-12	12 Loops
208BM-075-13	13 Loops

### Technical data

- Manifold barrel made of Brass alloy UNI-EN 12168 CW612N
- Manifold body size 1" and 1-1/4"
- Adaptor connections 3/4 Eurocone
- Maximum Operating Pressure 16 bar
- Operating Temperature 2 ÷ 85°C
- Maximum Test Pressure 25 bar
- Maximum glycol percentage 50%
- KV factors of the barrel: 1" size KV=4,8 ; 1-1/4" size KV=4,9

*The operating conditions need to be reduced depending to the operating conditions of the accessories connected at the manifold*

## Dimensions



Art.	A	B	C	D	E	F	G	H
208BM-065-02	1"	3/4"	50	100	41	37	38	1/2"
208BM-065-03	1"	3/4"	50	150	41	37	38	1/2"
208BM-065-04	1"	3/4"	50	200	41	37	38	1/2"
208BM-065-05	1"	3/4"	50	250	41	37	38	1/2"
208BM-065-06	1"	3/4"	50	300	41	37	38	1/2"
208BM-065-07	1"	3/4"	50	350	41	37	38	1/2"
208BM-065-08	1"	3/4"	50	400	41	37	38	1/2"
208BM-065-09	1"	3/4"	50	450	41	37	38	1/2"
208BM-065-10	1"	3/4"	50	500	41	37	38	1/2"
208BM-065-11	1"	3/4"	50	550	41	37	38	1/2"
208BM-065-12	1"	3/4"	50	600	41	37	38	1/2"
208BM-065-13	1"	3/4"	50	650	41	37	38	1/2"

1" Centre distance 50 mm

Art.	A	B	C	D	E	F	G	H
208BM-075-02	1 1/4"	3/4"	50	106	50	47	42	1/2"
208BM-075-03	1 1/4"	3/4"	50	156	50	47	42	1/2"
208BM-075-04	1 1/4"	3/4"	50	206	50	47	42	1/2"
208BM-075-05	1 1/4"	3/4"	50	256	50	47	42	1/2"
208BM-075-06	1 1/4"	3/4"	50	306	50	47	42	1/2"
208BM-075-07	1 1/4"	3/4"	50	356	50	47	42	1/2"
208BM-075-08	1 1/4"	3/4"	50	406	50	47	42	1/2"
208BM-075-09	1 1/4"	3/4"	50	456	50	47	42	1/2"
208BM-075-10	1 1/4"	3/4"	50	506	50	47	42	1/2"
208BM-075-11	1 1/4"	3/4"	50	556	50	47	42	1/2"
208BM-075-12	1 1/4"	3/4"	50	606	50	47	42	1/2"
208BM-075-13	1 1/4"	3/4"	50	656	50	47	42	1/2"

1-1/4" Centre distance 50 mm

## Accessories



**305NTK/1** Pair of straight full port ball valves, with union connection with O-Ring seal, completed with thermometer scale 0÷80°C. Available sizes 1" and 1-1/4".



**221K** Couple of wall zinc plated steel brackets for manifolds



**254G** End piece for manifolds completed with manual air vent valve and charge/discharge valve. O-ring seal on connection. Available sizes 1" and 1-1/4".



**256** Intermediate unit for manifolds completed with automatic air vent, thermometer, and charge/discharge valve. O-ring seal on connection with swivel nut. Available size 1".



**350TK/1** Pair of angle full port ball valves, with union connection with O-Ring seal, completed with thermometer scale 0÷80°C. Available size 1".



**213** Chrome plated brass end plug. O-ring seal on connection. Available sizes 1" and 1-1/4".



**285** Orientable fill and drain valve 1/2" connection with self-sealing O-ring. Hose connection G3/4"



**208 – 216T – 217T** Compression fittings with nut threaded 3/4" Eurocone, to connect copper pipes, polyethylene pipes and multilayer pipes at the manifolds. Available for the main commercial sizes of pipes.



**211N11** Full painted metal cabinet with key on door for embedded installation. Dimensions: 45 cm Height, 11÷15 cm Depth, 40-60-80-100-120 cm Width.



**157G** Orientable manual air vent valve with self-sealing O-ring