

## FEMALE/FEMALE MINI BALL VALVE

### Application

The female/female mini ball valves Art. **306** are used in large quantity in the hydronic distribution of cold and hot water and on compressed air distribution systems.

This valve has the main application where it is necessary intercept the flow to carry out maintenance at the connected downstream accessories or utilities.

The reduced flow section of the valve recommends its use where are not required high flow rates.

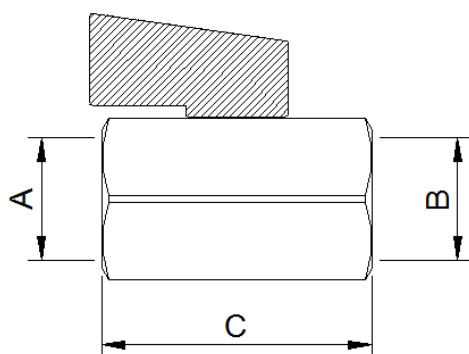
The chrome plating treatment permits to preserve the brass alloy by corrosion phenomena in the ordinary applications.



### Technical data

- Suitable for use on domestic water services, heating and cooling, air conditioning plants and compressed air systems
- Available sizes in the range 1/4" to 3/4"
- Connection threads ISO228
- Operating temperature 0°C ÷ 90°C
- Maximum operating pressure 10 bar
- Made of brass alloy UNI-EN12165 CW617N and UNI-EN12164 CW614N
- Stem O-rings made of EPDM compound
- Ball seals made of PTFE
- Handle made of Nylon PA66
- Chrome plated

### Dimensions



Art.	A	B	C
306-02	1/4"	1/4"	40
306-03	3/8"	3/8"	42
306-04	1/2"	1/2"	47
306-05	3/4"	3/4"	53