

HARD PLASTIC BOX WITH BOTTOM

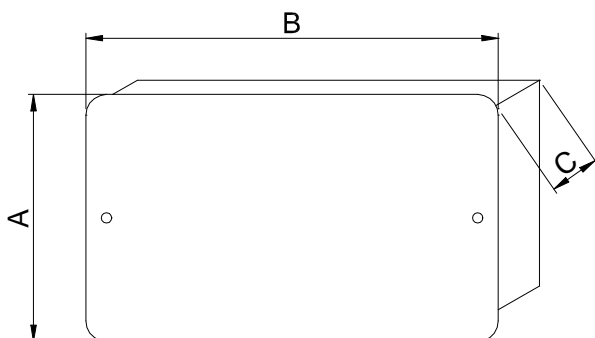
The new **te-sa** shock-proof plastic box is specifically designed for the installation of single or coplanar manifolds. The particular one-piece moulded design makes for high resistance to deformation and simple, fast installation. The unit is ready for pipe insertion on all four sides.

The double template on the enclosure bottom makes it ideally suited for installation of te-sa Series 203TGN domestic water plant manifolds.

Complete with adjustable mounting brackets, profiled cover, attachment screws and an internal component protection sheet for on-site installation work before fitting the cover.



Dimensions



Art.	A	B	C
209R-01	290	350	90
209R-02	290	430	90
209R-03	290	530	90
209R-04	290	630	90



Dimensions in mm.