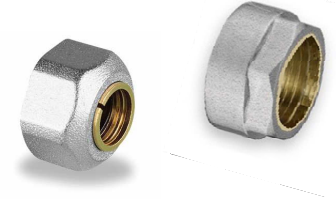


PRE-ASSEMBLED FITTING FOR COPPER PIPES

Application

te-sa's Art. 208 pre-assembled compression fitting for copper pipes have been planned and realized to ease and fasten in a secure way all the connections to distribution manifolds, radiator valves, various fittings and other installation components. In this fitting, the pipe retaining ring is pre-assembled in the adaptor nut in order to have only one component to deal with, instead of the usual three in the traditional fittings (nut, cut ring and seal or O-ring). In the 208 series a special seal, molded according to the pipe's diameter, has the double function of hydraulic seal and connection reduction. In order to ease the fitting's installation also in reduced spaces (where usually movements range are limited), a big focus has been put on the nut's design. The 1/2" threaded cap is tightened with 24mm wrenches, whereas for the 3/4" threaded series a 27mm wrench must be used.

With the 208 fitting the pipes connection is faster, secure and facilitated compared to the connections carried out with the three pieces fittings.



Assembly

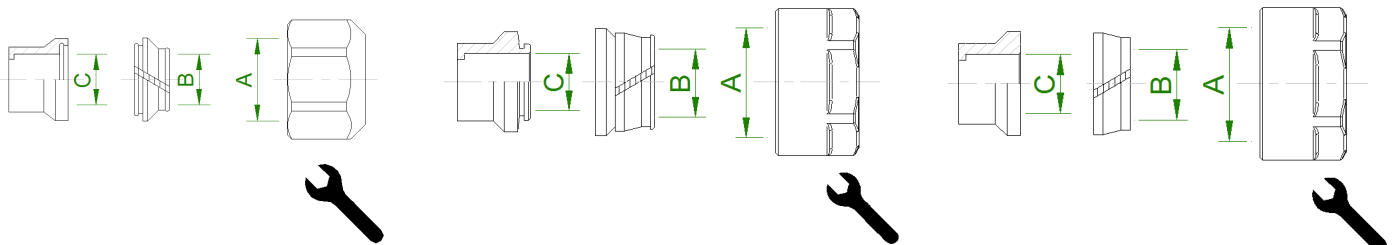
Cut the copper pipe to size using the proper scissors in a neat way and perpendicular to its axis. Whether needed, flare the pipe externally eliminating any residue produced due to the cutting. Before proceeding with inserting the copper pipe into the fitting, calibrate the pipe as much as possible in order to eliminate any ovalization and lack of flatness on its terminal part (keep into consideration the section to be inserted and an extra segment in order to allow the cap's course in case the adapter should be dismantled).

For the 1/2" nut fittings the insertion depth is 18 mm, whereas for the 3/4" nut fitting the depth is 24 mm. The pre-assembled fitting assembly can be carried out simply by fully inserting the fitting's seal to the connection on which the pipe must be linked and screwing the cap for a little more than one turn. Next, insert the copper pipe into the fitting until the end and screw the cap tight. The linking connection must be clean and without any impurity. A light lubrication of the connection with a silicon-based lubricant applied before the fitting's insertion can ease the assembly.

Technical data

- Max pressure 10 bar – Max temperature 90 °C
- Max glycol percentage 30%
- Suitable for use in heating systems and drinking water distribution systems
- Seal O-ring made of EPDM
- Assembly with 24 mm wrench for 1/2" and 27 mm for 3/4"
- Suggested assembly torque 30-40 Nm
- For 1/2" adapter connection 16 mm seat with insertion rounding-off and 3/4" Eurocono 18 mm seat
- Nut chrome plated made of brass CW617N UNI-EN12165
- Retaining ring made of brass CW614N UNI-EN12164
- Sizes 1/2"x10-12-14-15 pre-assembled with chromed nut
- Sizes 3/4"x12-14-16 pre-assembled with nickel-plated nut
- Sizes 1/2"x16 and 3/4"x15-18 in three pieces with chromed nut

Dimensions



Art.	A	B	C	🔧
208-04-10	1/2"	Ø10,2	Ø10	24
208-04-12	1/2"	Ø12,2	Ø12	24
208-04-14	1/2"	Ø14,2	Ø14	24
208-04-15	1/2"	Ø15,2	Ø15	24
208-04-16	1/2"	Ø16,2	Ø16	24

Art.	A	B	C	🔧
208-05-12	3/4"	Ø12,2	Ø12	27
208-05-14	3/4"	Ø14,2	Ø14	27
208-05-16	3/4"	Ø16,2	Ø16	27

Art.	A	B	C	🔧
208-05-15	3/4"	Ø15,2	Ø15	27
208-05-18	3/4"	Ø18,2	Ø18	27